



榮隆鐵工廠有限公司  
JUNG LUNG IRON WORKS CO., LTD.



榮隆鐵工廠有限公司  
JUNG LUNG IRON WORKS CO., LTD.



427 台中市潭子區中山路三段400號  
No. 400, Sec. 3, Chung San Rd., Tan Tzu Dist., Taichung City 427, Taiwan  
TEL: 886-4-25324082 E-mail: jung.lung1@msa.hinet.net  
FAX: 886-4-25318428 <http://www.junglung.com>

[www.junglung.com](http://www.junglung.com)





**榮隆鐵工廠有限公司**  
JUNG LUNG IRON WORKS CO., LTD.



## 公司簡介 Company Briefs

榮隆鐵工廠創立於1958年(民國47年)，具有悠久的歷史，由於擁有齊全的機械設備又採一貫作業生產，因此交貨都能即時迅速。加上用心於產品的開發生產，對於品質的要求及檢驗非常嚴格，如是博得客戶長期安心採購榮隆的產品，並獲取業界有口皆碑的好信譽。

本公司專業生產模具零配件及車床用的彈性筒夾，前者的產品細分如下：

導梢、回位梢、導套、襯套、導柱、拉桿、導襯套、定位環、限動桿、限動螺絲、限動桿、引導梢、退高梢。

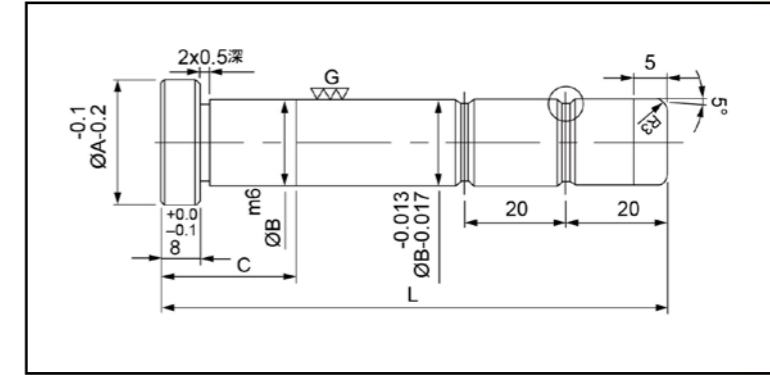
With its long history of establishment since 1958, Jung Lung Iron Works has owned the full machinery equipment and adopted an integrated production, thus guaranteeing a prompt and punctual delivery. The company has spared no efforts in the product development and conducted a strict quality inspection. Thus, Jung Lung's products are sold to customer in a long-termed basis and built up the good reputation in the field.

The company is now specialized in the manufacture of mold parts and collet chucks for lathe uses. Main products include: guide pins, return pins, guide bushes, bushings, guide pins, puller bolts, guide bushings, locating rings, stop bolts, stop screws, stop pins, guide pins, and taper pins.

### 規格索引 Specification Index

規品							
中文	導梢	導襯套	導套	襯套	定位環	回位梢	拉桿
英文	GP	EB	GB	GS	LS	RP	LP
備註	有油溝					無油溝	有油溝 有攻牙→尾端
中文	限動桿	限動螺絲	停止螺絲	斜度導梢	引導梢	退高梢	固定梢
英文	PBT	SH	STB	TLA	EGP	RB	PIN
備註	內牙	外牙	外牙	組合式	有油溝 有攻牙→沈頭	有油溝 有攻牙→頂端 & 尾部	無油溝 有攻牙

## 導梢 GP

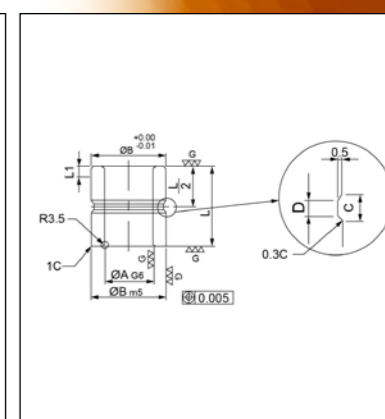
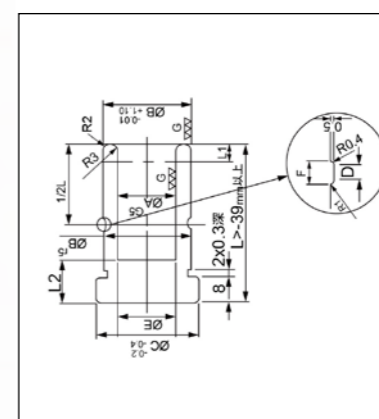
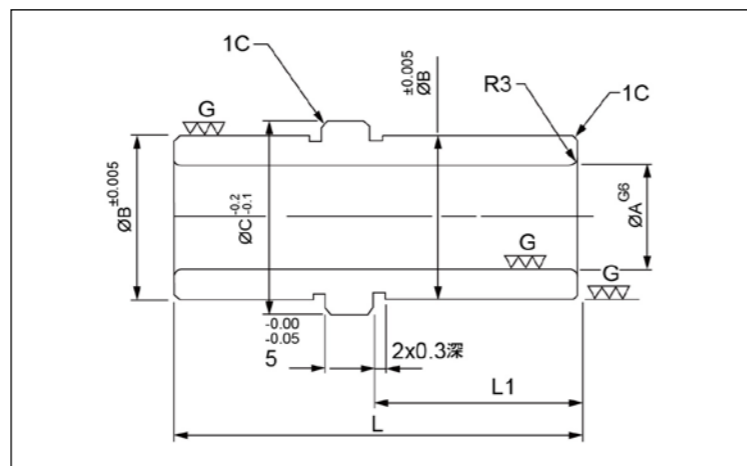


外徑 Ø	16	20	25	30	35	40	50
長度 L							
60	◎	◎	X	X	X	X	X
65	◎	◎	X	X	X	X	X
70	◎	◎	X	X	X	X	X
75	◎	◎	X	X	X	X	X
80	◎	◎	◎	◎	X	X	X
85	◎	◎	◎	◎	X	X	X
90	◎	◎	◎	◎	◎	X	X
95	◎	◎	◎	◎	◎	X	X
100	◎	◎	◎	◎	◎	◎	X
105	◎	◎	◎	◎	◎	◎	X
110	◎	◎	◎	◎	◎	◎	X
120	◎	◎	◎	◎	◎	◎	X
130	◎	◎	◎	◎	◎	◎	X
140	◎	◎	◎	◎	◎	◎	X
150	◎	◎	◎	◎	◎	◎	◎
160	◎	◎	◎	◎	◎	◎	◎
170	◎	◎	◎	◎	◎	◎	◎
180	◎	◎	◎	◎	◎	◎	◎
190	◎	◎	◎	◎	◎	◎	◎
200	◎	◎	◎	◎	◎	◎	◎
210	◎	◎	◎	◎	◎	◎	◎
220	◎	◎	◎	◎	◎	◎	◎
230	◎	◎	◎	◎	◎	◎	◎
240	◎	◎	◎	◎	◎	◎	◎
250	◎	◎	◎	◎	◎	◎	◎

外徑 Ø	16	20	25	30	35	40	50
長度 L							
260		◎	◎	◎	◎	◎	◎
270		◎	◎	◎	◎	◎	◎
280		◎	◎	◎	◎	◎	◎
290		◎	◎	◎	◎	◎	◎
300		◎	◎	◎	◎	◎	◎
310		◎	◎	◎	◎	◎	◎
320		◎	◎	◎	◎	◎	◎
330		◎	◎	◎	◎	◎	◎
340		◎	◎	◎	◎	◎	◎
350		◎	◎	◎	◎	◎	◎
360			◎	◎	◎	◎	◎
370			◎	◎	◎	◎	◎
380			◎	◎	◎	◎	◎
390			◎	◎	◎	◎	◎
400			◎	◎	◎	◎	◎
410				◎	◎	◎	◎
420				◎	◎	◎	◎
430				◎	◎	◎	◎
440				◎	◎	◎	◎
450				◎	◎	◎	◎
460				◎	◎	◎	◎
470				◎	◎	◎	◎
480				◎	◎	◎	◎
490				◎	◎	◎	◎
500				◎	◎	◎	◎

導襯套 EB

導套 / 襯套 GB/GS

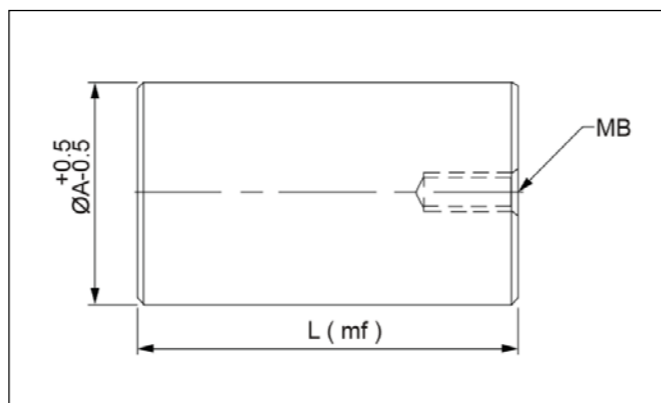


外徑 Ø 長度 L	16 (外徑 25)	20 (外徑 30)	25 (外徑 35)	30 (外徑 40)	35 (外徑 45)	40 (外徑 55)	45 (外徑 60)	50 (外徑 65)	50 (外徑 70)
28	◎	◎							
33	◎	◎	◎						
38	◎	◎	◎	◎					
43	◎	◎	◎	◎					
48	◎	◎	◎	◎					
53		◎	◎	◎		◎			
58			◎	◎	◎	◎			
63			◎	◎	◎	◎			
68				◎	◎	◎			
73					◎	◎			
78						◎			
83						◎			

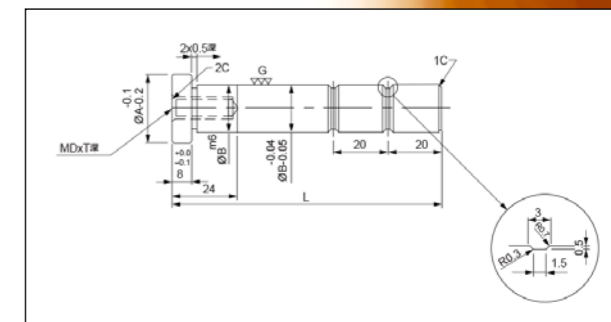
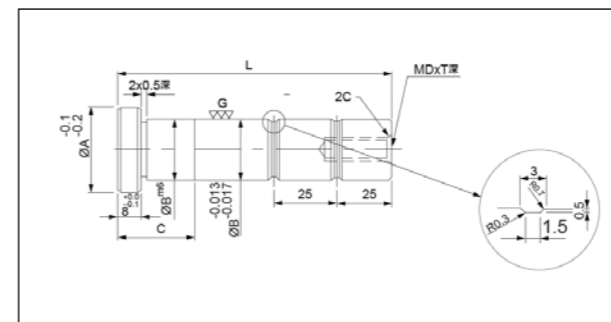
外徑 Ø 長度 L	16 (外徑 25)	20 (外徑 30)	25 (外徑 35)	30 (外徑 40)	35 (外徑 45)	40 (外徑 55)	外徑 Ø 長度 L	45 (外徑 60)	50 (外徑 65)	50 (外徑 70)	60 (外徑 80)	70 (外徑 90)	80 (外徑 100)
19	無油溝	無油溝	無油溝	無油溝	X	X	19	X	X	X	X	X	X
24	無油溝	無油溝	無油溝	無油溝	◎	X	24	X	X	X	X	X	X
29	無油溝	無油溝	無油溝	無油溝	◎	無油溝	29	X	無油溝	X	◎	◎	X
34	◎	◎	◎	◎	◎	無油溝	34	X	無油溝	X	X	X	X
39	◎	◎	◎	◎	◎	無油溝	39	X	無油溝	◎	◎	◎	X
44	◎	◎	◎	◎	◎	◎	44	X	◎	◎	X	X	X
49	◎	◎	◎	◎	◎	◎	49	X	◎	◎	◎	◎	X
54	◎	◎	◎	◎	◎	◎	54	X	X	X	X	X	X
59	◎	◎	◎	◎	◎	◎	59	◎	◎	◎	◎	◎	X
64	◎	◎	◎	◎	◎	◎	64	X	X	X	X	X	X
69	◎	◎	◎	◎	◎	◎	69	◎	◎	◎	◎	◎	X
74	◎	◎	◎	◎	◎	◎	74	X	X	X	X	X	X
79	◎	◎	◎	◎	◎	◎	79	◎	◎	◎	◎	◎	X
84	◎	◎	◎	◎	◎	◎	84	X	X	X	X	X	X
89	◎	◎	◎	◎	◎	◎	89	◎	◎	◎	◎	◎	X
94	◎	◎	◎	◎	◎	◎	94	X	X	X	X	X	X
99	◎	◎	◎	◎	◎	◎	99	◎	◎	◎	◎	◎	◎
104	◎	◎	◎	◎	◎	◎	104	X	X	X	X	X	X
109	◎	◎	◎	◎	◎	◎	109	◎	◎	◎	◎	◎	◎
114	◎	◎	◎	◎	◎	◎	114	X	X	X	X	X	X
119	◎	◎	◎	◎	◎	◎	119	◎	◎	◎	◎	◎	◎
124	◎	◎	◎	◎	◎	◎	124	X	X	X	X	X	X
129	◎	◎	◎	◎	◎	◎	129	◎	◎	◎	◎	◎	X
134	◎	◎	◎	◎	◎	◎	134	X	X	X	X	X	X
139	◎	◎	◎	◎	◎	◎	139	◎	◎	◎	◎	◎	X
144	X	◎	◎	◎	◎	◎	144	X	X	X	X	X	X
149	X	◎	◎	◎	◎	◎	149	◎	◎	◎	◎	◎	◎
159	X	◎	◎	◎	◎	◎	159	X	X	X	◎	◎	◎
169	X	X	◎		◎	◎	169	◎	◎	◎	◎	◎	X
							179	X	X	X	◎	◎	X
							189	X	X	X	◎	X	X
							199	X	X	X	◎	X	X



支撐柱 SP

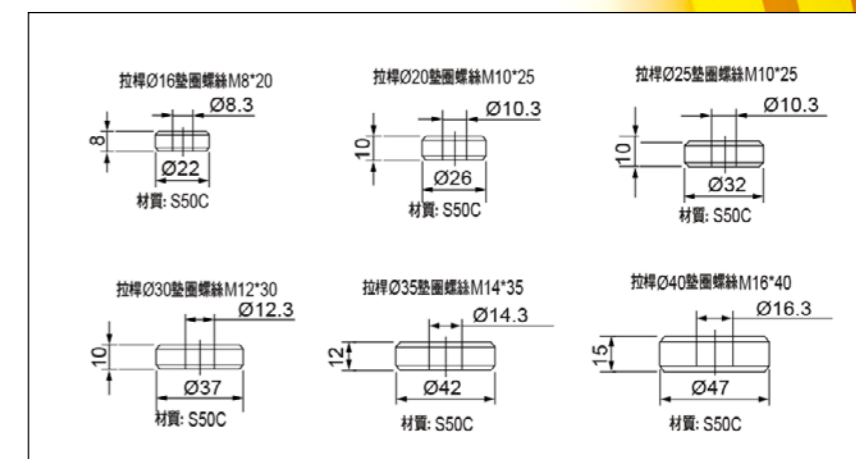


拉桿 / 引導梢 LP/EGP



外徑 $\varnothing$ 長度 L	25	30	35	40	45	50	55	60	65	70	80	90	100	110	120	130
50	◎	◎	◎	◎	◎	◎	◎	◎	◎	◎	◎	◎	◎	◎	◎	◎
60	◎	◎	◎	◎	◎	◎	◎	◎	◎	◎	◎	◎	◎	◎	◎	◎
70	◎	◎	◎	◎	◎	◎	◎	◎	◎	◎	◎	◎	◎	◎	◎	◎
80	◎	◎	◎	◎	◎	◎	◎	◎	◎	◎	◎	◎	◎	◎	◎	◎
90	◎	◎	◎	◎	◎	◎	◎	◎	◎	◎	◎	◎	◎	◎	◎	◎
100	◎	◎	◎	◎	◎	◎	◎	◎	◎	◎	◎	◎	◎	◎	◎	◎
110	◎	◎	◎	◎	◎	◎	◎	◎	◎	◎	◎	◎	◎	◎	◎	◎
120	◎	◎	◎	◎	◎	◎	◎	◎	◎	◎	◎	◎	◎	◎	◎	◎
130	◎	◎	◎	◎	◎	◎	◎	◎	◎	◎	◎	◎	◎	◎	◎	◎
140	◎	◎	◎	◎	◎	◎	◎	◎	◎	◎	◎	◎	◎	◎	◎	◎
150	◎	◎	◎	◎	◎	◎	◎	◎	◎	◎	◎	◎	◎	◎	◎	◎
160	◎	◎	◎	◎	◎	◎	◎	◎	◎	◎	◎	◎	◎	◎	◎	◎
170	◎	◎	◎	◎	◎	◎	◎	◎	◎	◎	◎	◎	◎	◎	◎	◎
180	◎	◎	◎	◎	◎	◎	◎	◎	◎	◎	◎	◎	◎	◎	◎	◎
190	◎	◎	◎	◎	◎	◎	◎	◎	◎	◎	◎	◎	◎	◎	◎	◎
200	◎	◎	◎	◎	◎	◎	◎	◎	◎	◎	◎	◎	◎	◎	◎	◎
210	◎	◎	◎	◎	◎	◎	◎	◎	◎	◎	◎	◎	◎	◎	◎	◎
220	◎	◎	◎	◎	◎	◎	◎	◎	◎	◎	◎	◎	◎	◎	◎	◎
230	◎	◎	◎	◎	◎	◎	◎	◎	◎	◎	◎	◎	◎	◎	◎	◎
240	◎	◎	◎	◎	◎	◎	◎	◎	◎	◎	◎	◎	◎	◎	◎	◎
250	◎	◎	◎	◎	◎	◎	◎	◎	◎	◎	◎	◎	◎	◎	◎	◎
260	◎	◎	◎	◎	◎	◎	◎	◎	◎	◎	◎	◎	◎	◎	◎	◎
270	◎	◎	◎	◎	◎	◎	◎	◎	◎	◎	◎	◎	◎	◎	◎	◎
280	◎	◎	◎	◎	◎	◎	◎	◎	◎	◎	◎	◎	◎	◎	◎	◎

拉桿墊圈

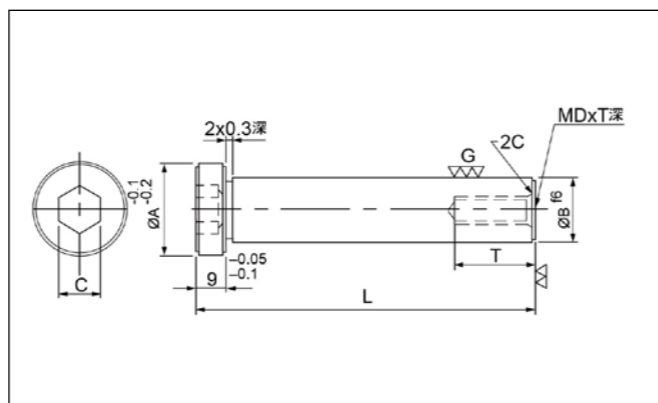


定位環 LS

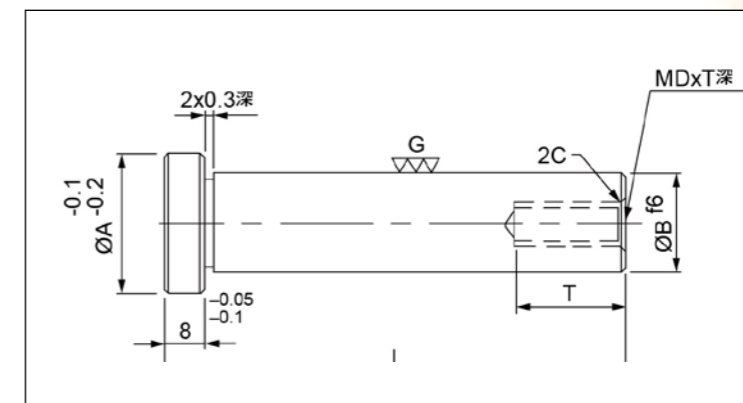
尺寸 Size	D	d	D1	D1	P	I	T
代號 Code							
100	18	70	11	6.8	85	7	10
100	24	70	11	5.8	85	7	15
120	27	90	11	6.8	105	7	15
150	32	110	15	9	130	9	20

限動桿 PBT

退高梢 / 回位梢 RP/RB



外徑 Ø	12	16	20	25
長度 L				
100	◎	◎	◎	◎
110	◎	◎	◎	◎
120	◎	◎	◎	◎
130	◎	◎	◎	◎
140	◎	◎	◎	◎
150	◎	◎	◎	◎
160	◎	◎	◎	◎
170	◎	◎	◎	◎
180	◎	◎	◎	◎
190	◎	◎	◎	◎
200	◎	◎	◎	◎
210	◎	◎	◎	◎
220	◎	◎	◎	◎
230	◎	◎	◎	◎
240	◎	◎	◎	◎
250	◎	◎	◎	◎

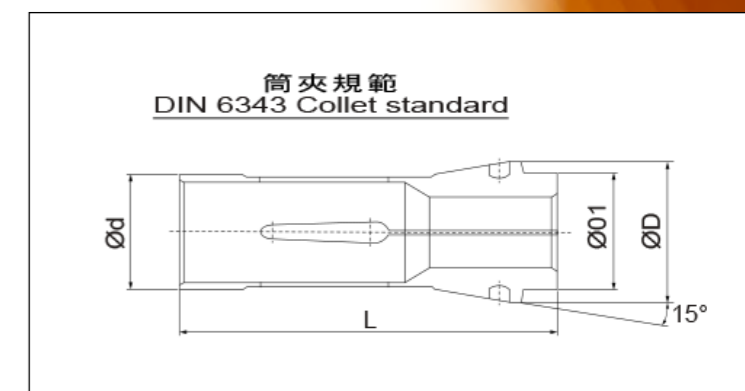
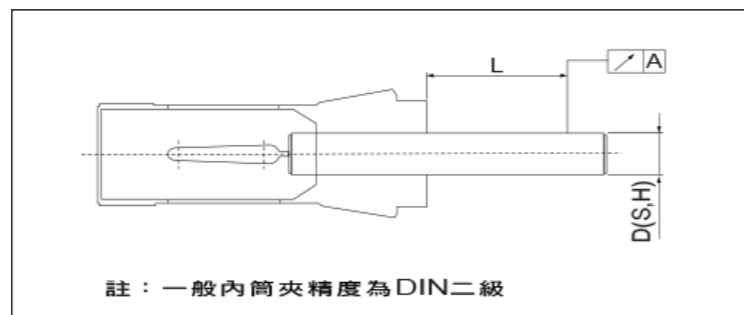
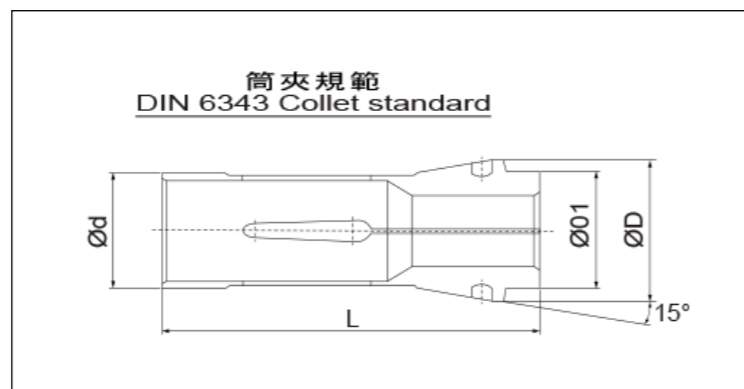


外徑 Ø	12	16	20	25	30	40	45	50
長度 L								
86	◎	◎						
91	◎	◎						
96	◎	◎	◎					
101	◎	◎	◎					
106	◎	◎	◎	◎				
111	◎	◎	◎	◎				
116	◎	◎	◎	◎				
121	◎	◎	◎	◎	◎			
126	◎	◎	◎	◎				
131	◎	◎	◎	◎	◎			
136	◎	◎	◎	◎				
141	◎	◎	◎	◎	◎			
146	◎	◎	◎	◎				
151	◎	◎	◎	◎	◎			
156	◎	◎	◎	◎				
161	◎	◎	◎	◎	◎			
166	◎	◎	◎	◎				
171	◎	◎	◎	◎	◎			
176	◎	◎	◎	◎				
181	◎	◎	◎	◎	◎			
186	◎	◎	◎	◎				
191	◎	◎	◎	◎	◎			
196	◎	◎	◎	◎				

外徑 Ø	12	16	20	25	30	40	45	50
長度 L								
201	◎	◎	◎	◎				
206	◎	◎	◎	◎	◎			
211	◎	◎	◎	◎				
216		◎	◎	◎	◎			
221		◎	◎	◎				
226		◎	◎	◎	◎			
231		◎	◎	◎				
236		◎	◎	◎	◎			
241		◎	◎	◎				
246		◎	◎	◎	◎			
251		◎	◎	◎				
256		◎	◎	◎	◎			
261		◎	◎	◎				
266		◎	◎	◎	◎			
271		◎	◎	◎				
276		◎	◎	◎	◎			
281		◎	◎	◎				
286		◎	◎	◎	◎			
291		◎	◎	◎				
296		◎	◎	◎	◎			
301		◎	◎	◎				
306			◎	◎	◎			
311			◎	◎				

彈性筒夾 Steel Collerts

彈性筒夾 Steel Collerts



彈性筒夾 Collect	最大夾持能力 (mm) Max. Chucking Capacity			d	D	D1	L	適合筒夾夾頭 Matching Collect Chuck
	圓棒	六角材	方寸					
	Round	Hexagon	Square					
161E	3~26	4~22	4~18	32	45	34	75	CL-26,CL-26A4
163E	3~30	4~26	4~20	35	48	38	80	CL-30,CL-30A4
171E	3~36	6~32	6~26	42	55	42	94	CL-36,CL-36A5
173E	3~42	6~36	6~29	48	60	50	94	CL-42,CL-42A5, CL-42A6
177E	5~52	8~45	7~36	58	70	60	94	CL-52,CL-52A6
185E	5~60	8~52	7~42	66	84	73	110	CL-6017,CL-6022,CL-60A6,CL60A8
193E	20~80	18~69	15~56	90	107	92	130	CL-80,CL-80A8

測棒 Test Bar	D (S,H)	L (mm)	A DIN	
			Class 1	Class 2
0.2~1.0		3	0.015	0.015
1.0~1.6		6		0.020
1.6~3.0		10		
3.0~6.0		16		
6.0~10.0		25		
10.0~18.0		40	0.020	0.030
18.0~24.0		50		
24.0~30.0		60		
30.0~50.0		80	0.030	0.040
50.0~60.0		100		

"Art-Nr. Item No."	OZ-Nr.	d 圓 (mm)	D (mm)	D1 (mm)	L 總長 (mm)	斜 (°)	● (mm)	■ (mm)	◆ (mm)
100E	615	6	10	6	30	15°	4.5	-	-
101E	1398	8	12	8	42	16°	6	-	-
103E	650	8	14	8	35	15°	5	-	-
109E	722	10	15.5	10	47.5	20°	7	6	5
110E	604	10	16	10	43	15°	7	-	-
111E	840	10	16	10	45	20°	7	6	5
113E	966	12	15.5	-	31	10°	10	-	-
117E	755	14	18	14	46	13°	10	9	7
120E	723	15	21	15	64	16°	12	9	7
125E	87	17.5	22	16	51	15°	14	12	9
136E	747	20	26	19	54	15°	16	14	11
138E	724	20	28	21	67	16°	16	14	11
140E	642	22	30	21	55	15°	16	14	11
143E	824	25	31	23	54	15°	20	17	14
145E	2464	25	35	27	77	16°	20	17	14
148E	639	28	38	28	70	15°	24	20	17
156E	991	30	39.3	30	86.5	15°	25	22	18
161E	609	32	45	34	75	15°	26	22	18
162E	829	35	43	34	70	15°	25	22	18
163E	644	35	48	38	80	15°	30	26	21
171E	546	42	55	42	94	15°	36	30	25
173E	612	48	60	50	94	15°	42	36	30
185E	797	66	84	73	110	15°	60	50	40
190E	3207	88	106	94	115	15°	80	70	57
193E	2712	90	107	92	130	15°	80	70	57